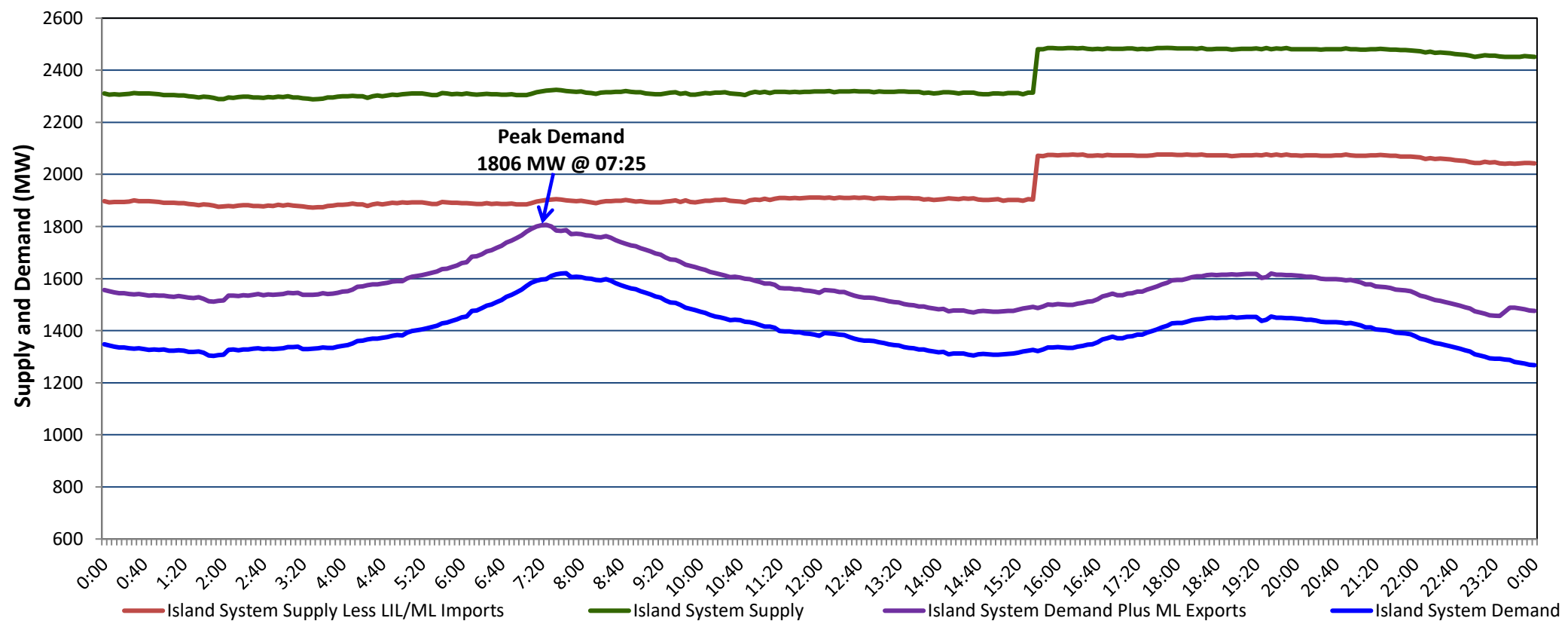


Newfoundland Labrador Hydro (NLH) Supply and Demand Status Report Filed Friday, March 03, 2023

Section 1 Island Interconnected System Supply, Demand & Exports Actual 24 Hour System Performance For Thursday, March 02, 2023



Supply Notes For March 02, 2023

1,2

A At 1537 hours, March 02, 2023, Holyrood Unit 1 available (170 MW).

Section 2 Island Interconnected Supply and Demand

Fri, Mar 03, 2023	Island System Outlook ³		Seven-Day Forecast	Temperature (°C)		Island System Daily Peak Demand (MW)	
				Morning	Evening	Forecast	Adjusted ⁷
Available Island System Supply: ⁵	2,429	MW	Friday, March 3, 2023	-10	-8	1,775	1,674
NLH Island Generation: ^{4,8}	1,695	MW	Saturday, March 4, 2023	-9	-9	1,500	1,403
NLH Island Power Purchases: ⁶	95	MW	Sunday, March 5, 2023	-7	-4	1,455	1,358
Other Island Generation:	230	MW	Monday, March 6, 2023	-2	-3	1,365	1,269
ML/LIL Imports:	409	MW	Tuesday, March 7, 2023	-4	-3	1,350	1,254
Current St. John's Temperature & Windchill:	-10 °C	-17 °C	Wednesday, March 8, 2023	-1	1	1,315	1,220
7-Day Island Peak Demand Forecast:	1,775	MW	Thursday, March 9, 2023	2	0	1,345	1,249

Supply Notes For March 03, 2023

3

- Notes:
1. Generation outages for running and corrective maintenance are included. These are not unusual for power system operations. They generally do not impact customer supply. The power system operators schedule outages to system equipment whenever possible to coincide with periods when customer demands are low and sufficient supply reserves are available. However, from time to time equipment outages are necessary and reserves may be impacted.
 2. Due to the Island system having no synchronous connections to the larger North American grid, when there is a sudden loss of large generating units there may be a requirement for some customer's load to be interrupted for short periods to bring generation output equal to customer demand. This automatic action of power system protection, referred to as under frequency load shedding (UFLS), is necessary to ensure the integrity and reliability of system equipment. Under frequency events have typically occurred 5 to 8 times per year on the Island Interconnected System and the resultant customer load interruptions are generally less than 30 minutes. With the activation of the Maritime Link frequency controller during the winter of 2018, UFLS events have occurred less frequently.
 3. As of 0800 Hours.
 4. Gross output including station service at Holyrood (24.5 MW) and improved NLH hydraulic output due to water levels (35 MW).
 5. Gross output from all Island sources (including Note 4).
 6. NLH Island Power Purchases include: CBPP Co-Gen, Nalcor Exploits, Rattle Brook, Star Lake, Wind Generation and capacity assistance (when applicable).
 7. Adjusted for curtailable load, market activities and the impact of voltage reduction when applicable.
 8. Due to limitations inherent in the design of combustion turbines, the output of combustion turbines may be reduced in the event that ambient temperatures exceed the threshold

Section 3 Island Peak Demand Information Previous Day Actual Peak and Current Day Forecast Peak

Thu, Mar 02, 2023	Actual Island Peak Demand ⁹	7:25	1,806 MW
Fri, Mar 03, 2023	Forecast Island Peak Demand		1,775 MW

Notes: 9. Island Demand / LIL / ML Exports (where applicable) is supplied by NLH generation and purchases, plus generation owned and operated by Newfoundland Power and Corner Brook Pulp & Paper (Deer Lake Power, DLP).